

DULUTH CHURCHES

Religious Influence Has Been Gradually Asserting Itself in Duluth.

DONATIONS MOST GENEROUS

Brief Description of Leading Denominations Throughout the City.

A good story is told of a Minneapolis real estate man in the good old times when the Flour City was growing at a frightful rate and city lots were rapidly rising. He took a friend of his out to show him the great progress everything was making and when they passed a magnificent church, he would say: "Here's another instance of the way we boom things out here. Even the gospel gets in the swim."

The above is a rough way of stating a great truth, but it is very emphatic. There is, however, no booming about the religious feeling in the west. While the business interests are being looked after by energetic business men the silent influence of religion has been at work looking after the spiritual interests of mankind.

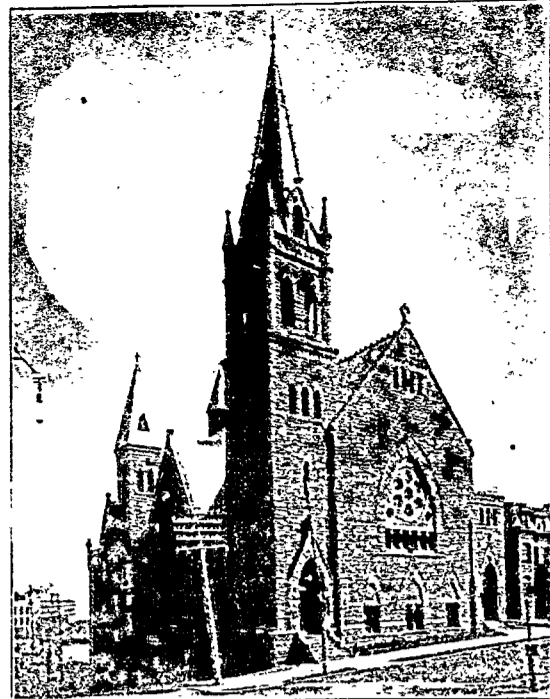
Duluth has not been neglected. Each sect of our consequence is represented here, and the people—whether actuated by the motives of the Minneapolis real estate man above quoted, or

known as the Church of the Sacred Heart, was organized in 1869.

The Polish church, St. Mary's, Star of the Sea, is located on Third street and Fourth avenue east. Pastor, Rev. John Droka; parish membership 350 families; organized 1885. The other churches are: St. James, West Duluth, Rev. T. J. Mackay, pastor, organized in 1890; St. Jean Baptiste, Eleventh avenue west, pastor, Rev. L. Grandchamp, organized in 1885; St. Anthony de Padua (German), corner Second street and Third avenue east, 125 families, Rev. Francis S. Kosmerl, rector, organized in 1891; St. Clements church, between Twentieth and Twenty-first avenues west, pastor, Rev. George Schofield, O. S. B., organized in 1887.

The Lutheran Churches.

The next largest sect in Duluth is the Lutheran. There are Swedish, Norwegian, German and English Lutherans—all of whom do a great amount of work for good in quiet, unostentatious ways. Besides the 11 churches which this sect controls, there are many societies of charitable and religious order. The total number of Lutherans in the city is estimated at upwards of 6,000. The largest parish in the city is the Swedish Evangelical Lutheran and Bethany church, Rev. C. C. Cassell, pastor, membership 600. Next comes the Zion Norwegian Lutheran, with 500 members. Rev. O. C. Dable is its pastor. The other churches are: First Swedish Evangelical Lutheran, Rev. John A. Krantz, pastor, organized in 1871; First Norwegian Danish Evangelical Lutheran, Rev. E. P. Harbo, pastor, organized in 1871; First Norwegian Evangelical Lutheran church of West Duluth, Rev. Johannes Sether, pastor; St. Matthew's German Lutheran church, Rev. Dietrich Kogge,



First Methodist Church

copal church, St. Mark's, 331 West Fourth street, Rev. W. A. Bruce, pastor; the First German church, Rev. J. F. Steiner, pastor; the Norwegian and Danish church, Rev. C. H. Johnson, pastor. There are also two Swedish churches.

The Presbyterians.

There are about 1,500 Presbyterians and 10 Presbyterian churches in the city. The largest congregation attends the palatial edifice on Second street and Third avenue east, which has a membership of 650. Rev. T. H. Cleland is pastor. This church has grown rapidly during the past year and is today in a very flourishing condition. Many members take an active interest in mission work at the Bethel.

Outside of the First church there are about 1,000 members scattered through the various churches and missions. The Second Presbyterian church at 1505 West Superior street, has 238. It was organized in 1873, and Rev. T. M. Finnley has been its pastor through several years of prosperity. West Duluth's church, the Westminster, was organized in 1889 and has 125 members. Lakeside church, Rev. A. H. Carver, pastor, was organized in 1890 and has 83 members.

The Glen Avon church is presided over by Rev. Samuel Semple and contains 75 members. Then there is the Hazelwood Park church and the Duluth Heights mission, both under the pastorate of Rev. W. B. Greenshields. Besides there is the New Duluth church, House of Hope, Rev. W. L. Hackett, pastor; Bethany chapel on Garfield avenue, and the Norwegian church, Haus Hennem, pastor.

The Baptists.

There are 900 Baptists in Duluth. The First church has a notable history, having been organized in 1871, and

side, and the Holy Apostles' mission in West Duluth. Rev. Mr. Ryan is assisted by F. N. Crosby, lay reader, in conducting St. Paul's and St. Luke's, while Rev. J. H. Sheridan looks after the other missions. There are about 650 communicants in the city. The St. Luke's hospital, Miss Ida J. Taylor, matron, is conducted under the auspices of the Episcopal church.

The Unitarians.

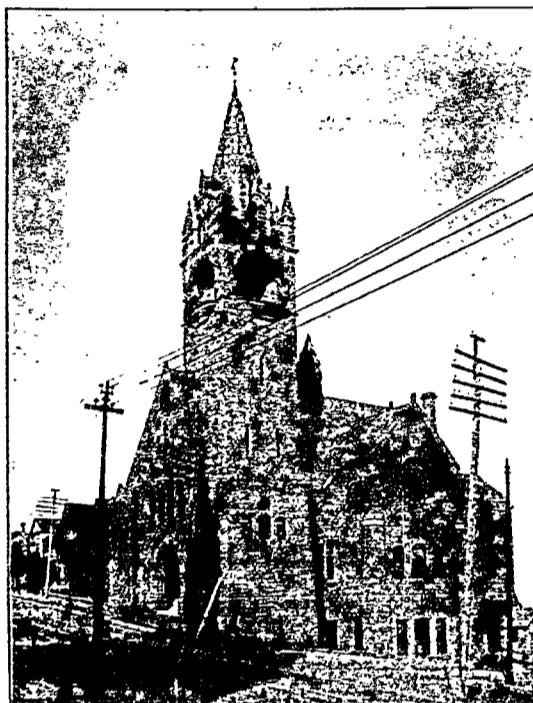
Next in importance numerically—though this energetic little band would seriously object to being classed so low in point of importance and influence—are the Unitarians, who were organized in 1887. The present pastor is Rev. F. C. Southworth. The Unity club, a child of this organization, has become a prominent feature in the literary circles of Duluth.

Other Denominations.

The Christian church probably has 400 to 450 followers. There are two church edifices of this sect: The Swedish Church of Christ, Twentieth avenue west and Second street, Rev. Ludwig Sundeen, pastor, and the First Christian church on West Fourth street, no pastor.

Other earnest denominations that are doing a great deal in their own peculiar way towards educating the soul and raising the standard of morals in the community are the German Evangelical church, three societies; Seventh Day Adventists, Salvation army and the two Hebrew synagogues. The first of the last mentioned sect is the Congregation of Moses, 105 First avenue east, Rev. Hyman Appleman, rabbi; the other is the Congregation Tifereth Israel at 825 Fourth avenue east, Rev. Abraham Fine, rabbi.

Last and in some respects perhaps the most important instruments for moral and intellectual culture are the



First Presbyterian Church.

by devotion to God—have been decidedly generous in their donations towards the building of temporal evidences of the spiritual side of man's nature—the churches.

The Catholic Church.

In point of size the membership of the Roman Catholic church ranks first. Duluth is specially favored with a bishop, the Right Rev. James McGolrick, D. D., whose diocese includes Aitkin, Becker, Beltrami, Crow Wing, Hubbard, Itasca, Kittson, Lake, Marshall, Norman, Pine, Polk and St. Louis counties. The bishopric was established by apostolic brief Oct. 3, 1889. Very Rev. Joseph Bub is vicar general and Rev. Timothy Corbett is dean.

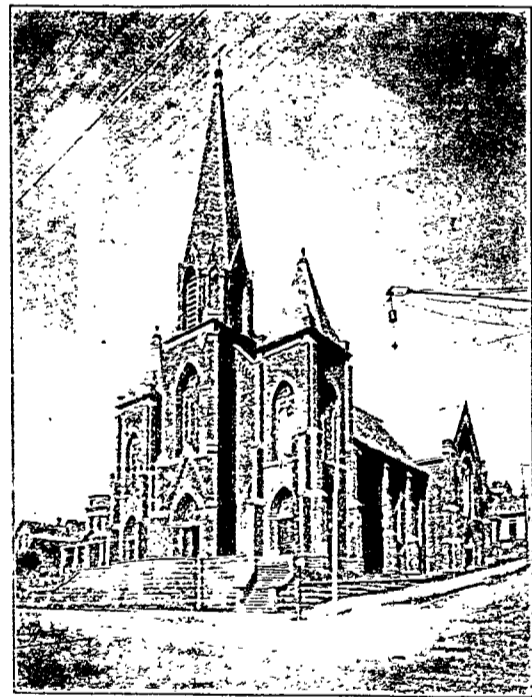
The religious communities of the diocese are all under the sisters of St. Benedict, and a provincial house with 70 sisters is located at Duluth. Sisters are located at Moorhead, White Earth and Barnesville. St. Mary's hospital of Duluth is also under the order. In the diocese are 32 priests, 43 churches, 38 stations, 10 parochial schools, with 1,000 attendance and a Catholic population of 23,000, of which 3,000 are Indians. Of the white population nearly 12,000 are located in Duluth. During the year the order of St. Benedict has been branching through the diocese and has established a hospital and school in East Grand Forks.

The cathedral is located at the corner of Fourth street and Second avenue west and is an imposing structure. The parish of the cathedral consists of a membership of 600 families, with Rev. Timothy Corbett as rector and Rev. James Green as assistant. The organization which was formerly

pastor; Norwegian Lutheran church, at Ninth avenue east and Seventh street, Rev. Iver G. Aschim, pastor; St. John's English Evangelical Lutheran church, Lake avenue and Third street, the only English church of this city, having a membership of 100, and being presided over by Rev. S. W. Kahns; Finnish church at West Duluth, Rev. Henry Sarvella, pastor; Norwegian and Danish Free church, Rev. H. T. Hinuins, pastor, and St. Stephen's German church at West Duluth, no pastor.

Methodist Episcopal.

The third in point of size of membership is the Methodist Episcopal church, with 2,000 members and an edifice that will seat nearly 2,000 people and is one of the finest, architecturally, in the Northwest. The Methodists are too well known to require any special mention here. They carry out in Duluth the same plans that are laid out for the church's work everywhere; they are aggressive workers for Christ: enthusiastic yet tolerant, and they firmly believe that good, healthy booms should not be confined to the commercial world. The magnificent structure on Third street with its reading rooms, great choir and massive organ, as well as its great membership, is evidence of the progressive character of the Methodists. The present pastor is Rev. G. H. Humason. Other Methodist Episcopal churches in the city are: Asbury Methodist of West Duluth with a membership of 400, Rev. Robert Forbes, pastor; Grace church, Rev. Dr. Dresser, pastor; the Oneota church, founded in the '60's, Rev. R. H. Craig, pastor; Lester Park church, Rev. J. W. Heard, pastor; African Methodist Epis-



Catholic Church.

having as an offshoot the Endion, which was organized in 1896. These two organizations have since been united. Rev. W. W. Dawley is the present pastor, and the congregations are rapidly increasing under his leadership. Besides looking after the strictly spiritual matters, the Baptists devote some time to social affairs, which are greatly furthered by a so-called Men's organization. Other Baptist churches throughout the city are:

The Second Baptist at Twentieth avenue west, Rev. J. W. Loughridge, pastor; New Duluth Baptist and three Swedish churches, to-wit: Swedish Bethel Baptist, Rev. Magnus Larson, pastor; First Swedish Baptist, Rev. Christopher Silene, pastor; Third Swedish Baptist, Rev. I. Hedberg, pastor.

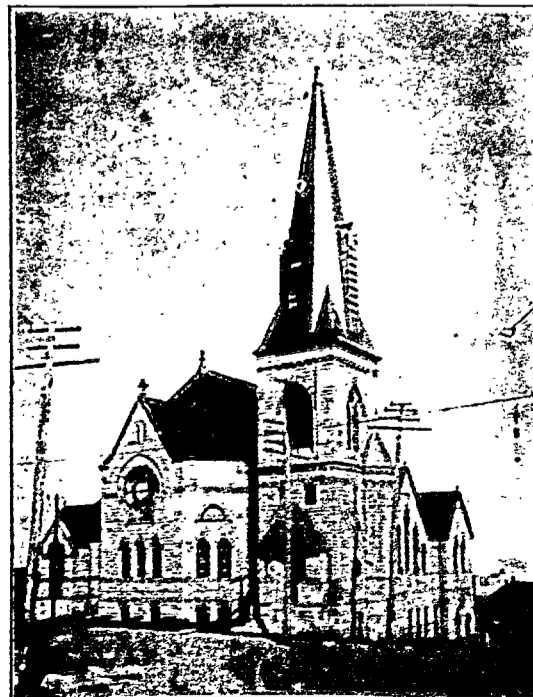
The Congregationalists.

There are four Congregationalist churches in the city, aggregating in membership 625. The Pilgrim Congregationalist church was organized in 1871, and has a membership of 450. This is one of the most flourishing congregations in the city, and occupies a handsome structure on Second street and Lake avenue. The other churches are: Morley Congregational at Endion, Plymouth Congregational of West Duluth, and Mayflower Congregational at New Duluth.

The Episcopalians.

One of the oldest congregations in Duluth is the St. Paul's Protestant Episcopal, which was organized by the oldest settlers in 1869. The present rector is Rev. A. W. Ryan. Auxiliary to this is St. Luke's mission at the West End, St. John's mission at Lake-

two Bethels, under the devoted guardianship of Rev. C. C. Salter. The amount of good these institutions, assisted as they are both by the churches, lay societies and the city government, are doing cannot be estimated by any known rules of arithmetic. It is simply incalculable.



Pilgrim Congregational Church.